



HyperFire™ & RapidFire™ Security Cameras



Dual Schedule Camera Manual

Table of Contents

I.	Changing Your Camera Schedule	1
II.	Scheduling Options	2
III.	Configuring Your Schedules	3
IV.	Saving and Transferring Schedules to Your Camera	4

Changing Your Camera Schedule

Your HyperFire™ or RapidFire™ camera's trigger schedules can be adjusted from your personal computer using the "RECONYX Security Camera Scheduling" software. The camera's trigger schedules control when the camera is "awake" to sense motion triggers and take pictures. The camera schedules are stored on your memory card and transferred to your camera when you insert the card in the camera and turn the camera on.

Once your schedules are transferred they are retained by the camera – even when the camera is off. Therefore you don't need to use the scheduling software again unless you want to change the schedules. The schedules are also retained on your computer for future use, so that the next time you run the scheduling software, you see the schedules you most recently selected rather than the factory defaults.

TIP: *Your HyperFire™ or RapidFire™ camera will work with cards formatted either FAT or FAT32. If you are uncertain of the formatting of your card, use "MapView" to erase the card (see **MapView™ User Guide: Erase Memory Card**); erasing the card will also properly format it for use with your camera.*

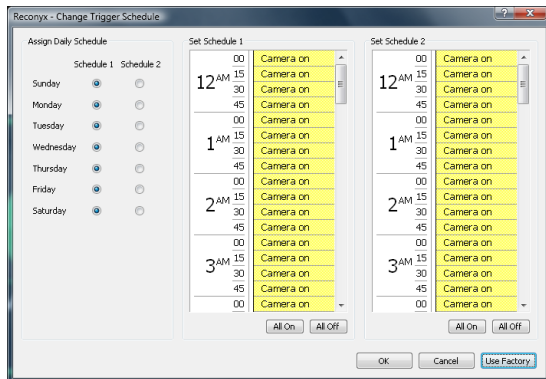
To change your camera schedules, insert your memory card into the card reader of your computer, move your mouse cursor over the "RECONYX Schedule Security Camera" icon on your desktop and double-click your left mouse button. Or, from the Microsoft Windows **Start** menu, select **Programs > RECONYX > Schedule Camera**.

Scheduling Options

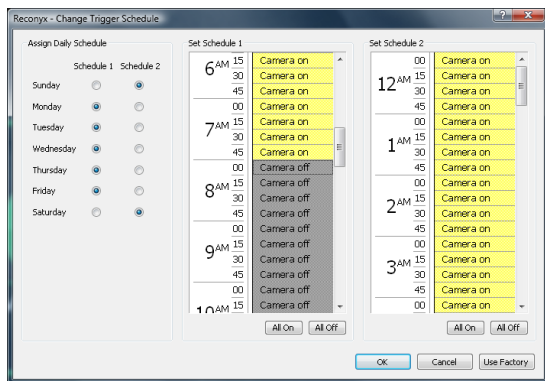
The schedule software opens the first time with the factory default schedules. The default schedules have the camera on 24 hours a day, 7 days a week.

There are two schedules available for each day of the week that can be assigned to either Schedule 1 or Schedule 2.

The most common reason for multiple schedules is to handle weekends differently than weekdays. For example, you can run a weekend schedule separate from the rest of the week by setting Monday through Friday to "Schedule 1" and Saturday and Sunday to "Schedule 2".



During normal working hours during the week, you may not want to take pictures of legitimate activity; but want the camera on after everybody leaves. Likewise, if nobody is around on weekends, you may want it to take pictures all day. You can do both by setting up Schedule 1 and Schedule 2 like the example below.



In the example image above, the camera is off during the week from 8am to 6pm (Schedule 1). It is on for triggers all day Saturday and Sunday (Schedule 2), but

Configuring Your Schedules

- Click on the circle buttons next to the days of the week to assign them to Schedule 1 or Schedule 2.
- In Schedule 1, click the fifteen-minute blocks to change the setting from **Camera on** to **Camera off**, or vice versa. Repeat for Schedule 2.
- To select larger blocks of time, click and hold your left mouse button in the fifteen-minute block you want to start with. While holding the mouse button, drag your cursor down until the block of time you want is highlighted, and then release the mouse button to change the setting from **Camera on** to **Camera off**, or vice versa.
- Click **All On** to quickly change the setting for all time blocks in that schedule to **Camera on**.
- Click **All Off** to quickly change the setting of all time blocks in that schedule to **Camera off**.
- Click **Use Factory** at any time to reset the schedules back to the factory defaults.

Saving and Transferring Schedules to Your Camera

When you have finished setting the trigger schedules for your camera, click **OK** to save your changes and close the scheduling software or click **Cancel** to close the scheduling software without saving your changes.

Your memory card now contains your camera's new schedules. The next time you turn on your camera *with this memory card inserted*, your camera will be programmed according to your customized changes and will display "Saving Schedule" when powered on. After the camera reads the configuration file and reprograms itself, it will delete the file so that you don't inadvertently program another camera with these schedules at some later date.

TIP: *Programming multiple security cameras is made easy with the scheduling software. Just create one configuration and save it to multiple memory cards; one for each camera.*

Note: Security model cameras and Professional model cameras use different configurations and different software to program those cameras. If you use the security configuration software, a professional model camera will not be able to read the settings on the memory card. Likewise, if you use the professional configuration software, a security model camera will not be able to read the settings on the memory card.

Disclaimer

While every effort has been made to ensure that the information contained in this "User Guide" is accurate and complete, no liability can be accepted for any errors or omissions.

RECONYX reserves the right to change the specifications of the hardware and software described herein at any time without prior notice.

RECONYX makes no warranties for damages resulting from corrupted or lost data due to a mistake in operation or malfunction of the camera, the software, memory cards, personal computers, or peripheral device.